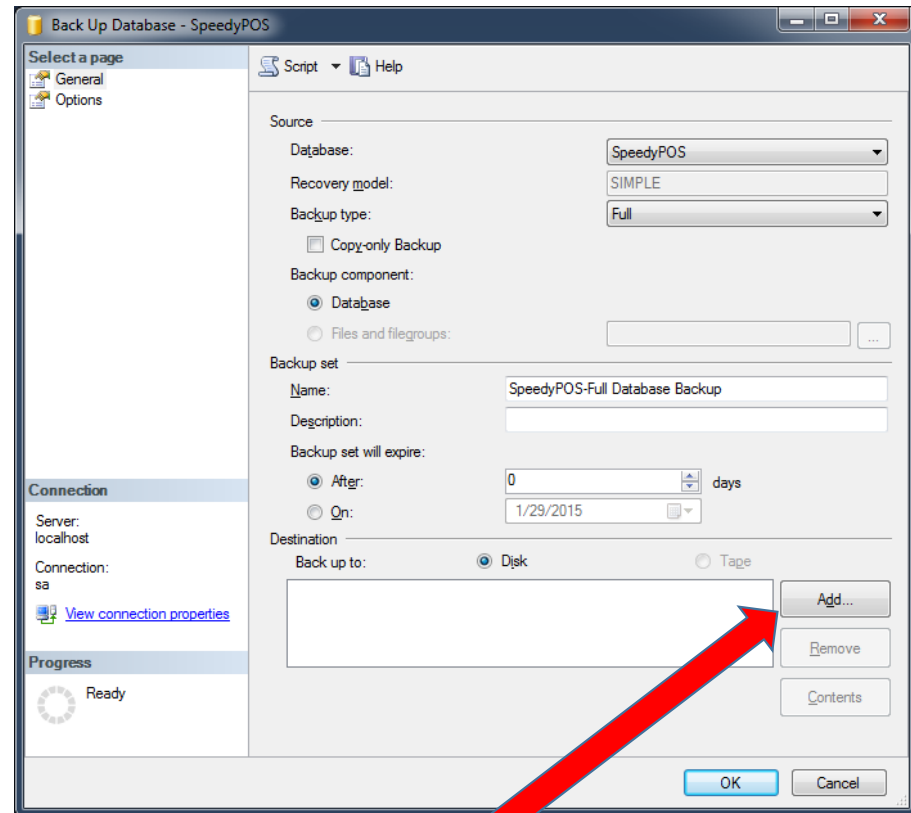
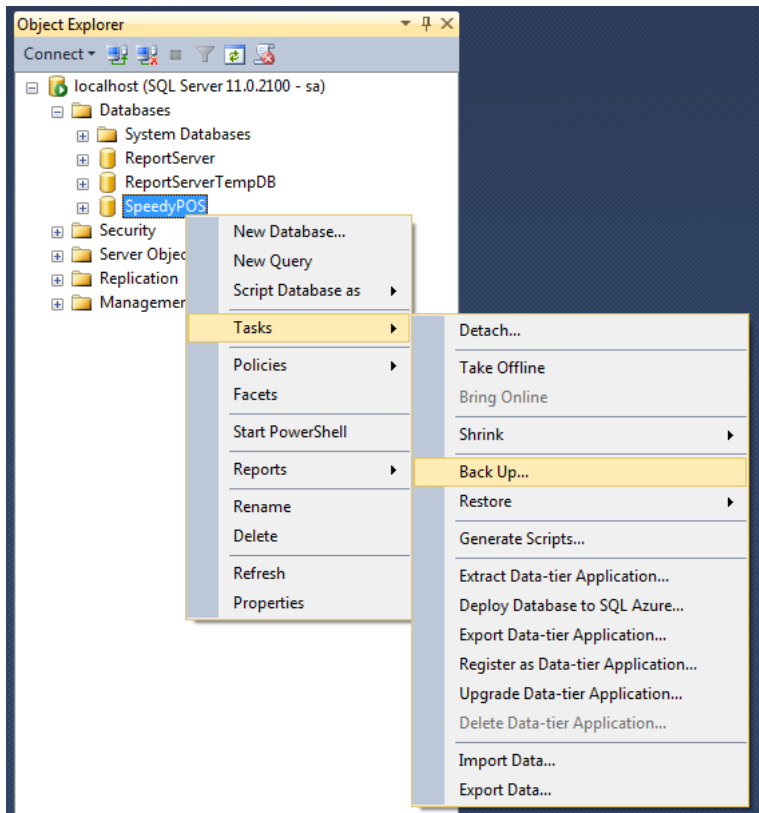
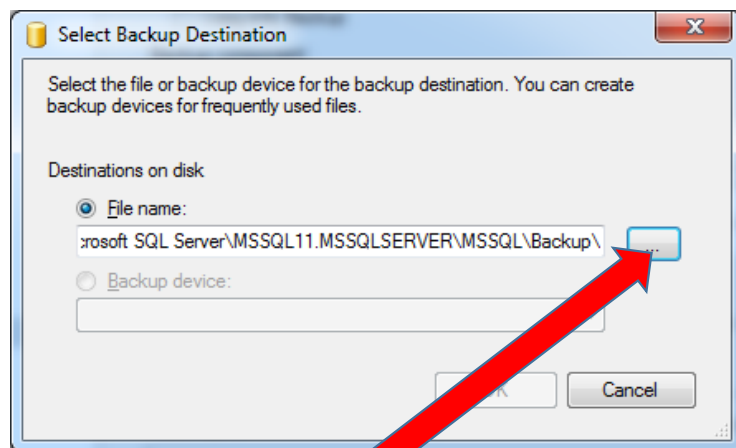


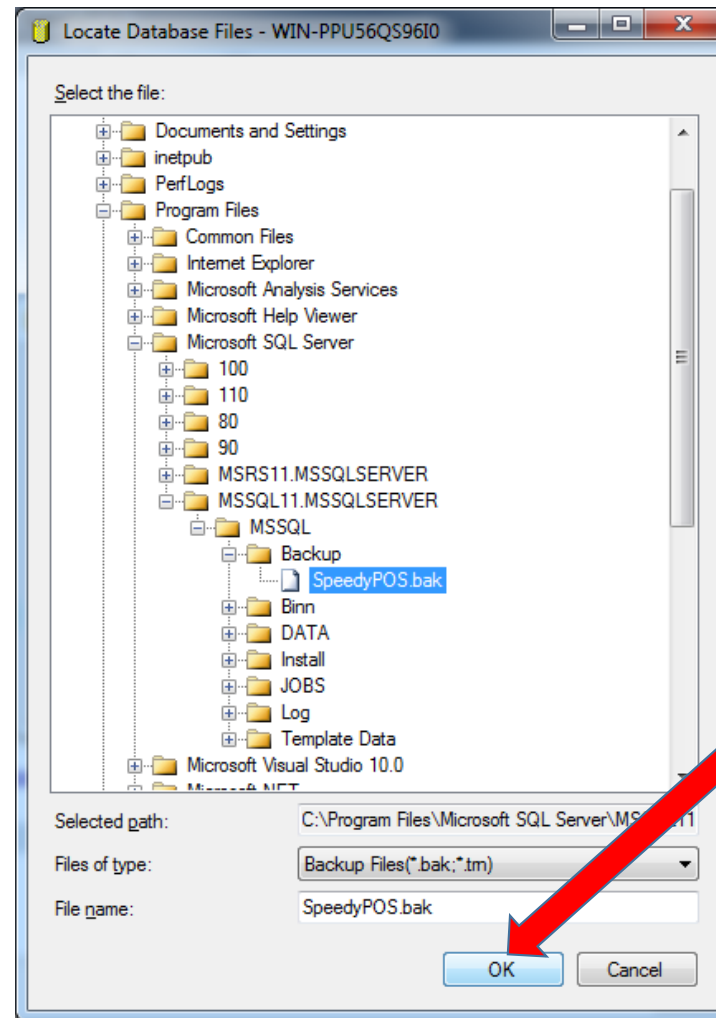
How to backup a db from MSSMS



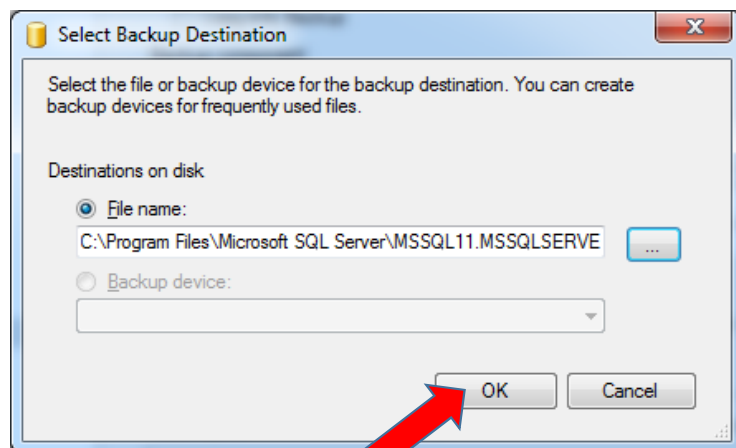
Click Add



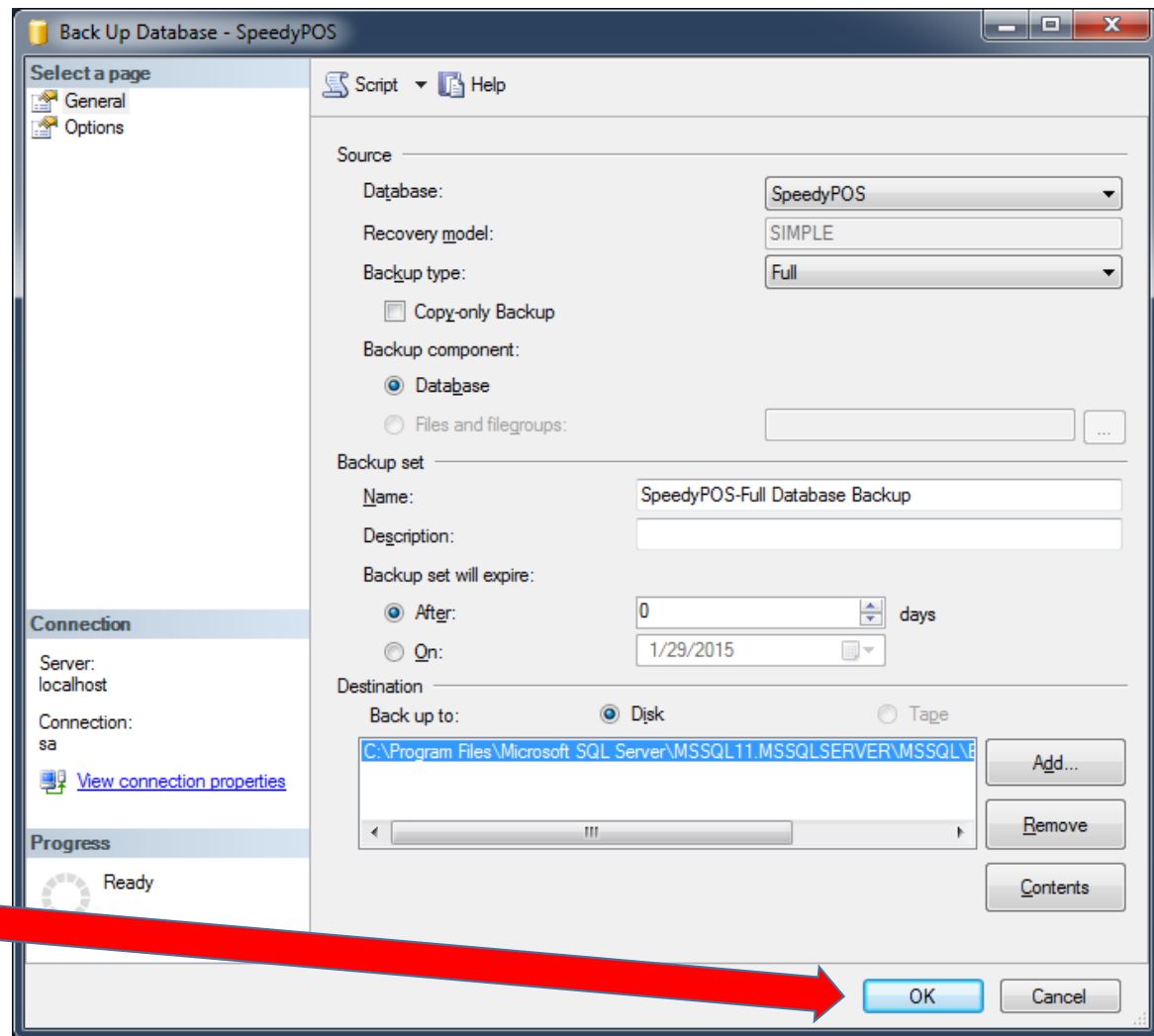
1 - Click Here and add a file name for the backup

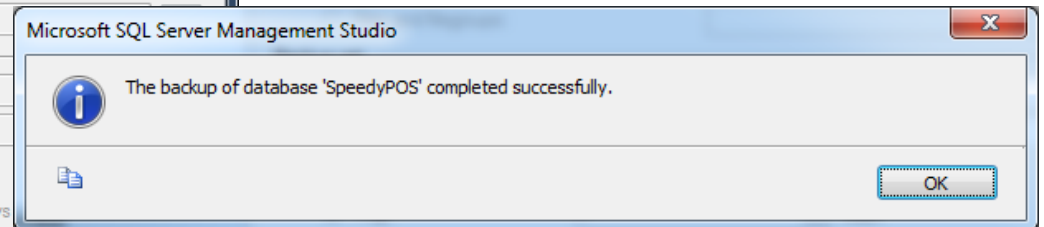
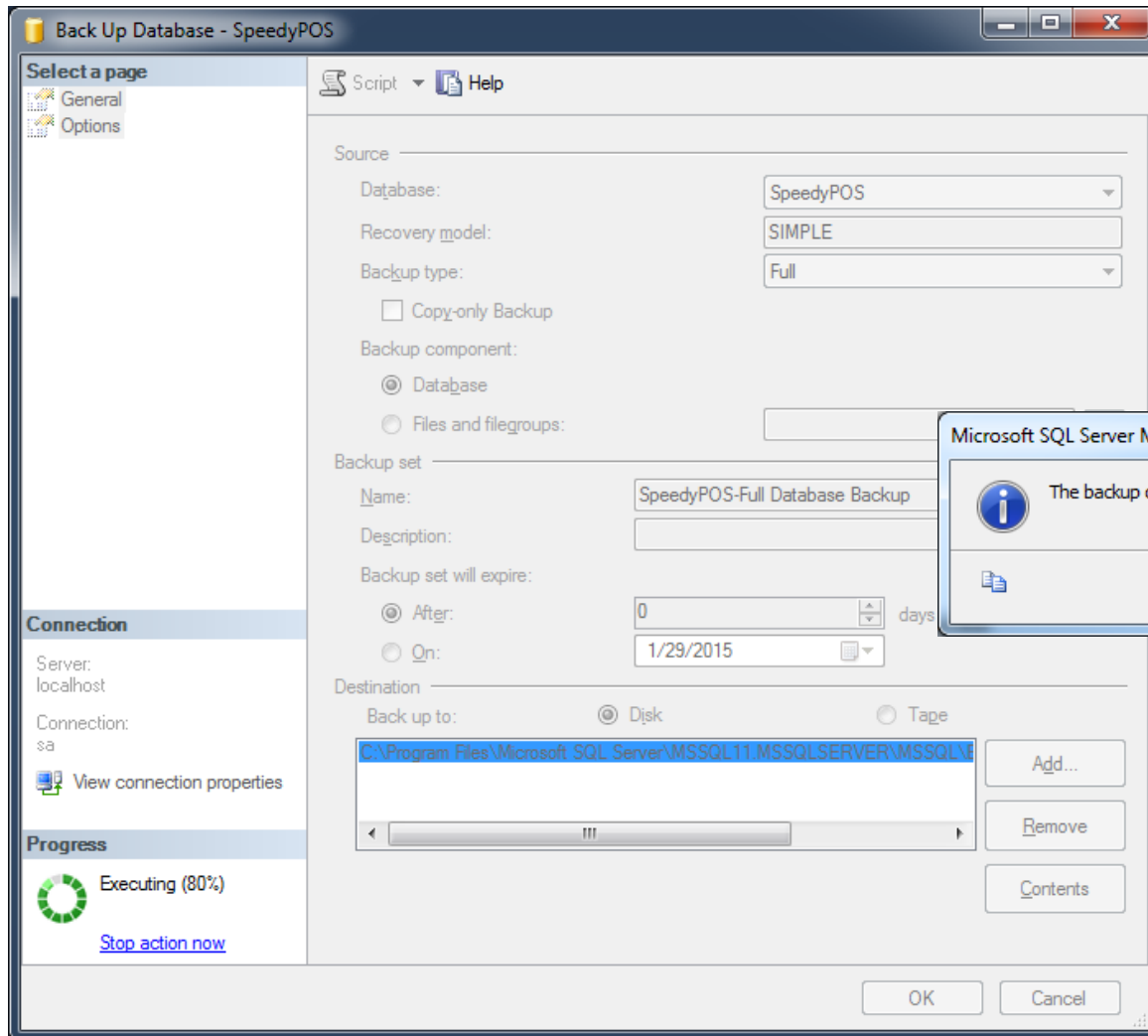


2- Click OK

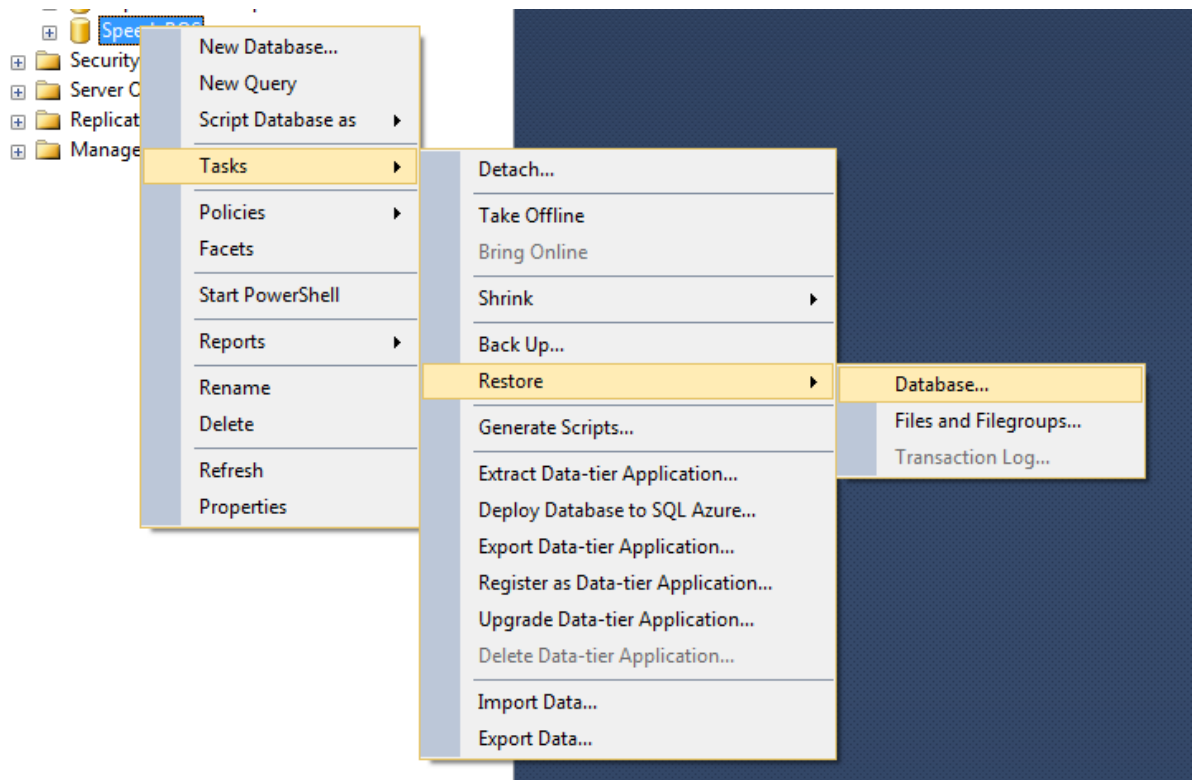


Click OK



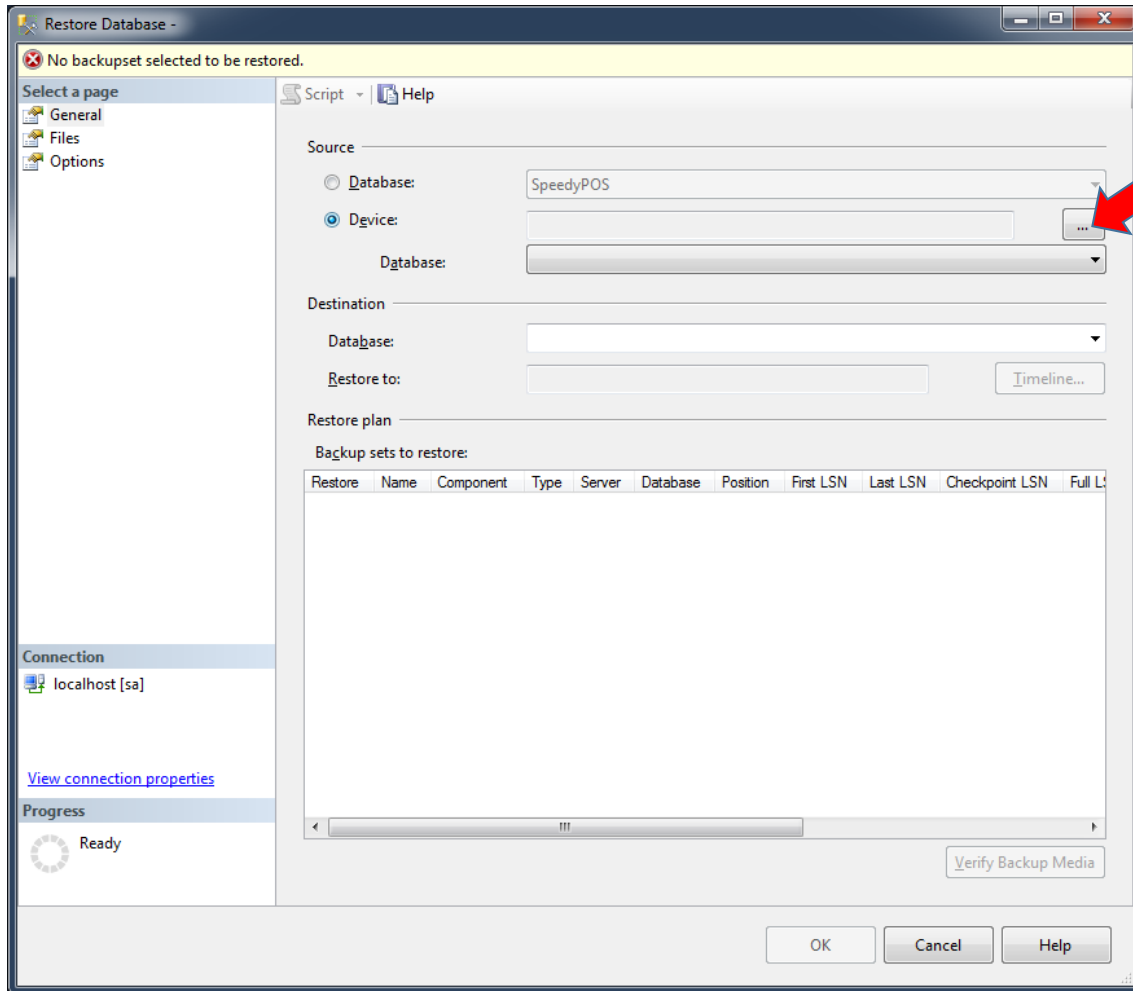


Backup is Done !!!

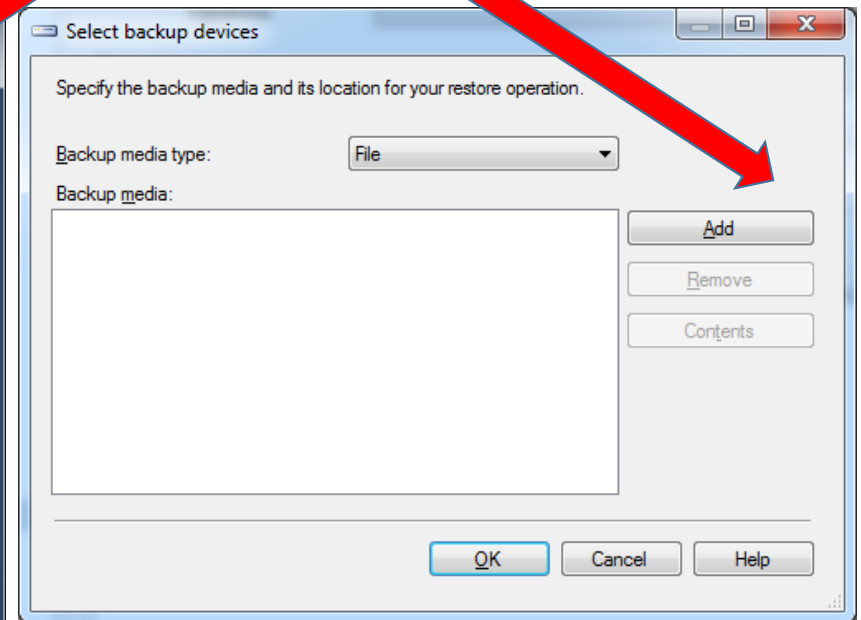


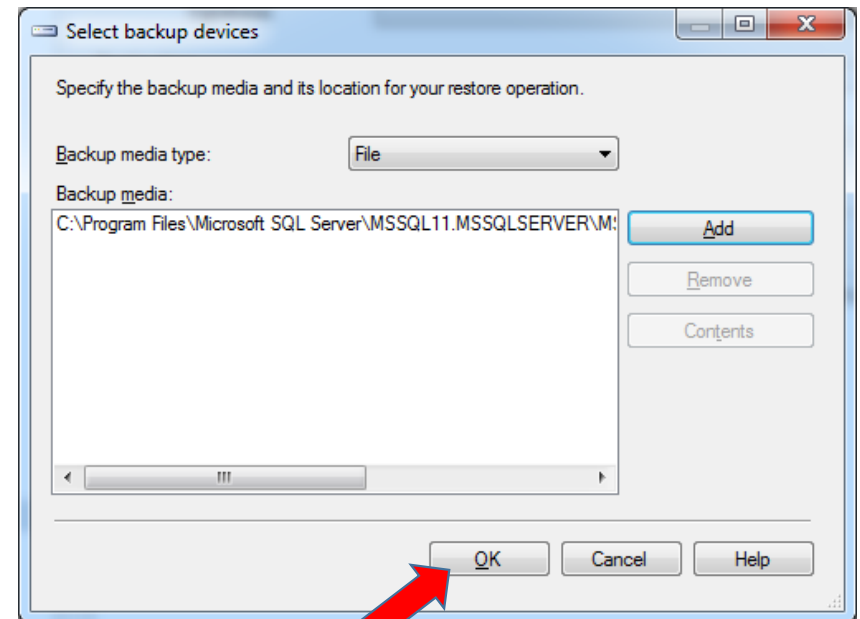
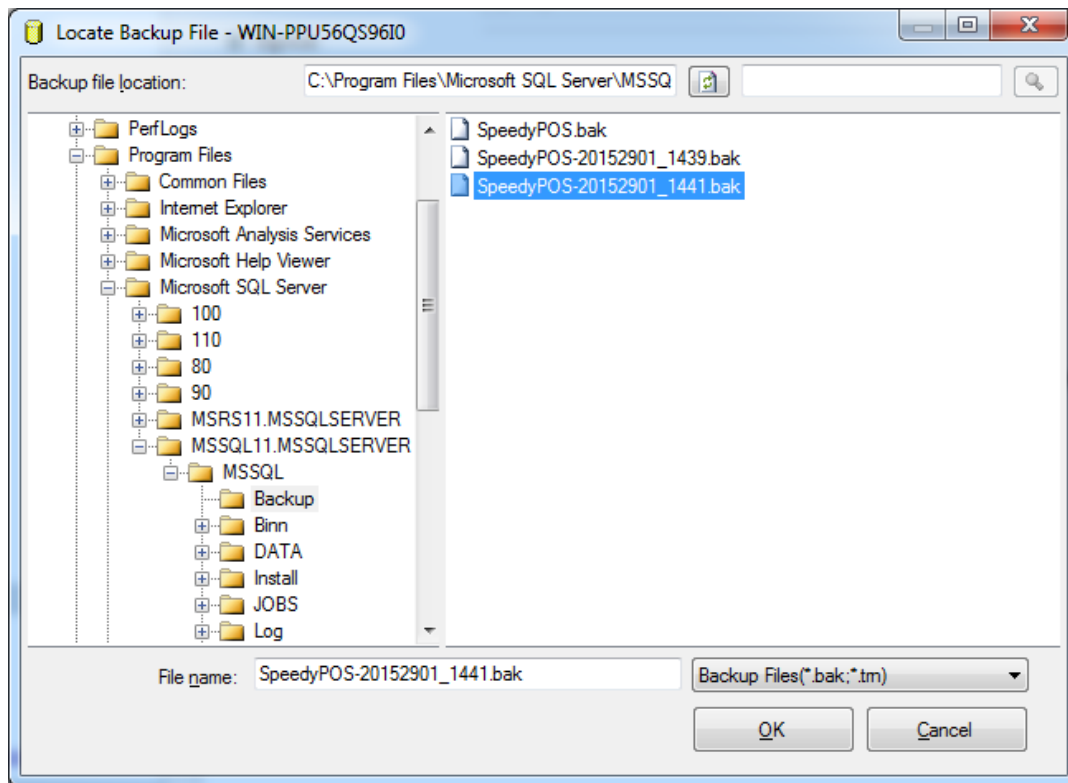
How to restore a database:

Select Database Restore.



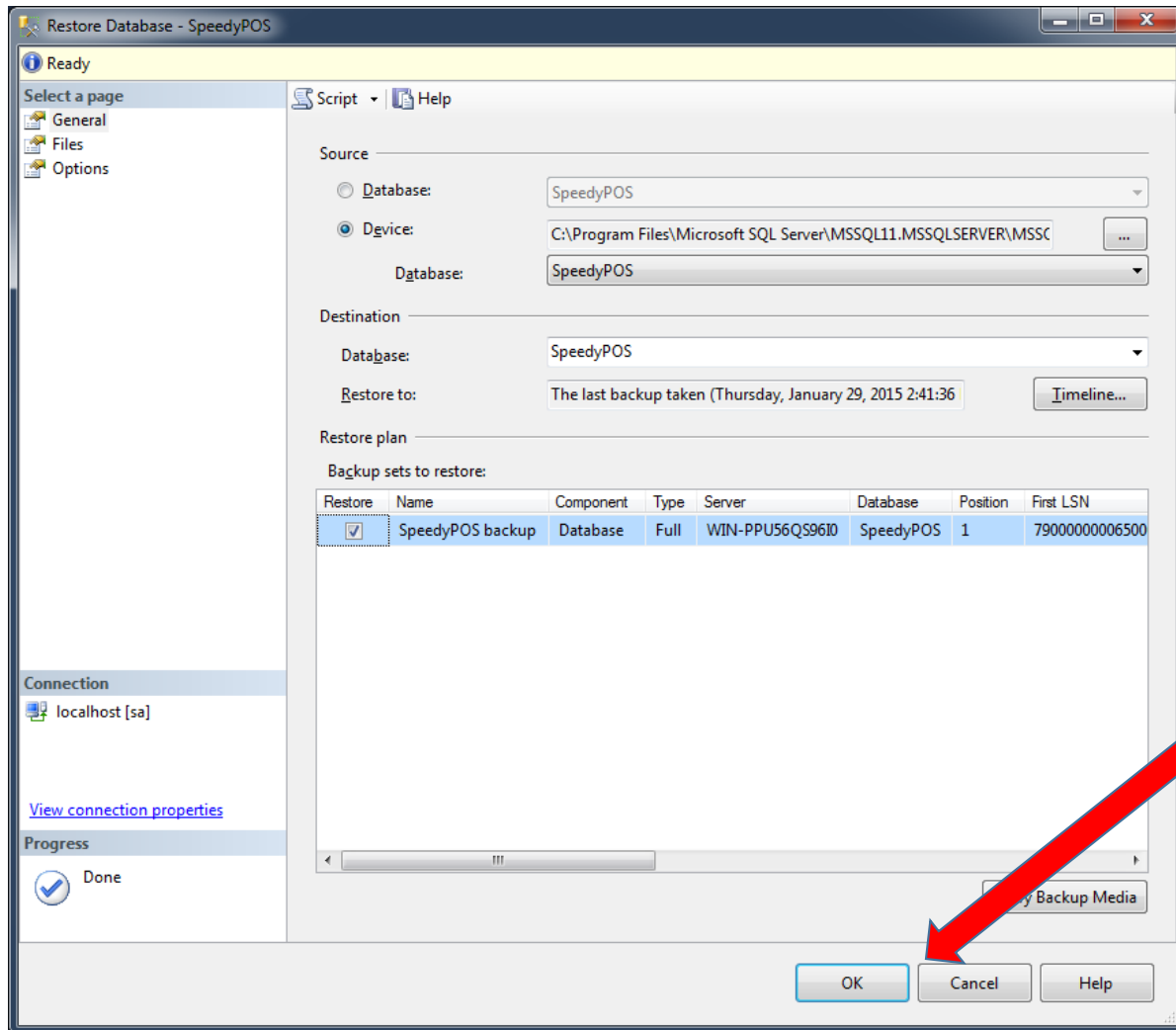
Backup file name is a "device" that Has to be added.



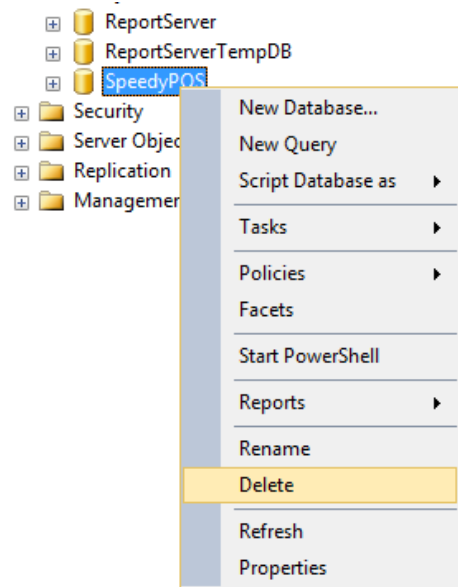


Click OK





Click OK, wait for restore to finish and It is done !!



To delete a database, simply click on Delete

