



Hikvision Solution Introduction

- POS Text Overlay



1

Brief Introduction

2

POS DVR Solution

3

POS Network Camera Solution

4

Hybrid Solution

5

What is POS text overlay ?

The information of transaction can be overlaid on the preview image and be recorded into the video records.



Why do we need POS text overlay ?

HIKVISION

■ With the help of Hikvision DVR's POS text overlay function, it is possible to integrate video surveillance system into the central management system of chain retail, grocery or restaurant, easy to manage



Why do we need POS text overlay ?

HIKVISION

■ The video records with POS text overlaid provide more details of a certain transaction and it is easy for file searching. This technology can be easily applied for solving clients dispute problems and preventing inside jobs.



What choice do we have now?

HIKVISION

Hikvision provides POS text overlay solutions for analog CCTV application and high definition network-based surveillance application both to meet clients' different requirements.

- Analog-based Solution:
POS DVR, IO Server, Analog Camera, POS Cashier Machine.....
- HD Network-based Solution:
POS IP Camera, POS NVR, IO Server, POS Cashier Machine.....



1 Brief Introduction

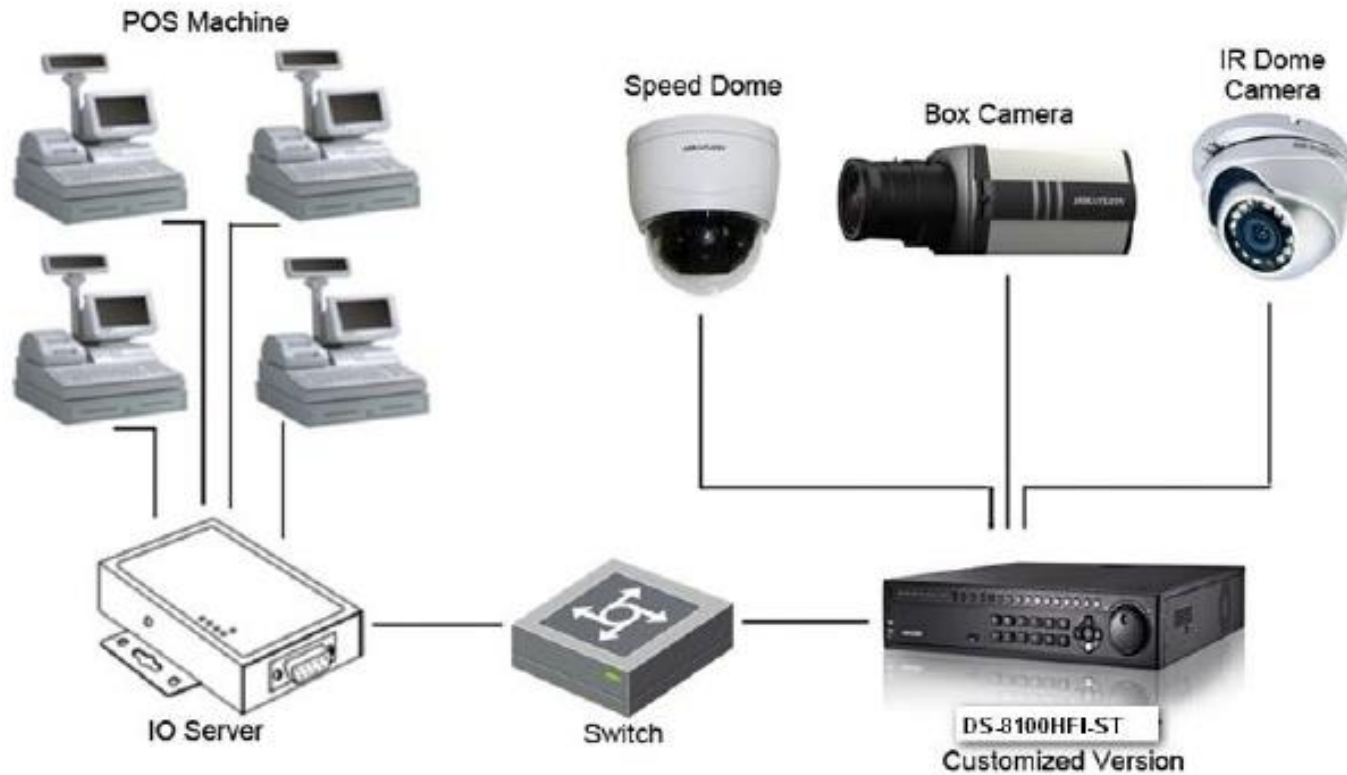
2 POS DVR Solution

3 POS Network Camera Solution

4 Hybrid Solution

5

Topology



DS-8100HFI-ST



- H.264 video compression
- 4CIF real time and recording
- POS local recording
- POS record local playback
- Support POS keyword search
- 4/8/16 POS text overlay channels
- Up to 8 SATA HDD at 4TB each

DVR Models

HIKVISION

DVR Model	DS-8104HFI-ST	DS-8108HFI-ST	DS-8116HFI-ST
POS Channel	4	8	16

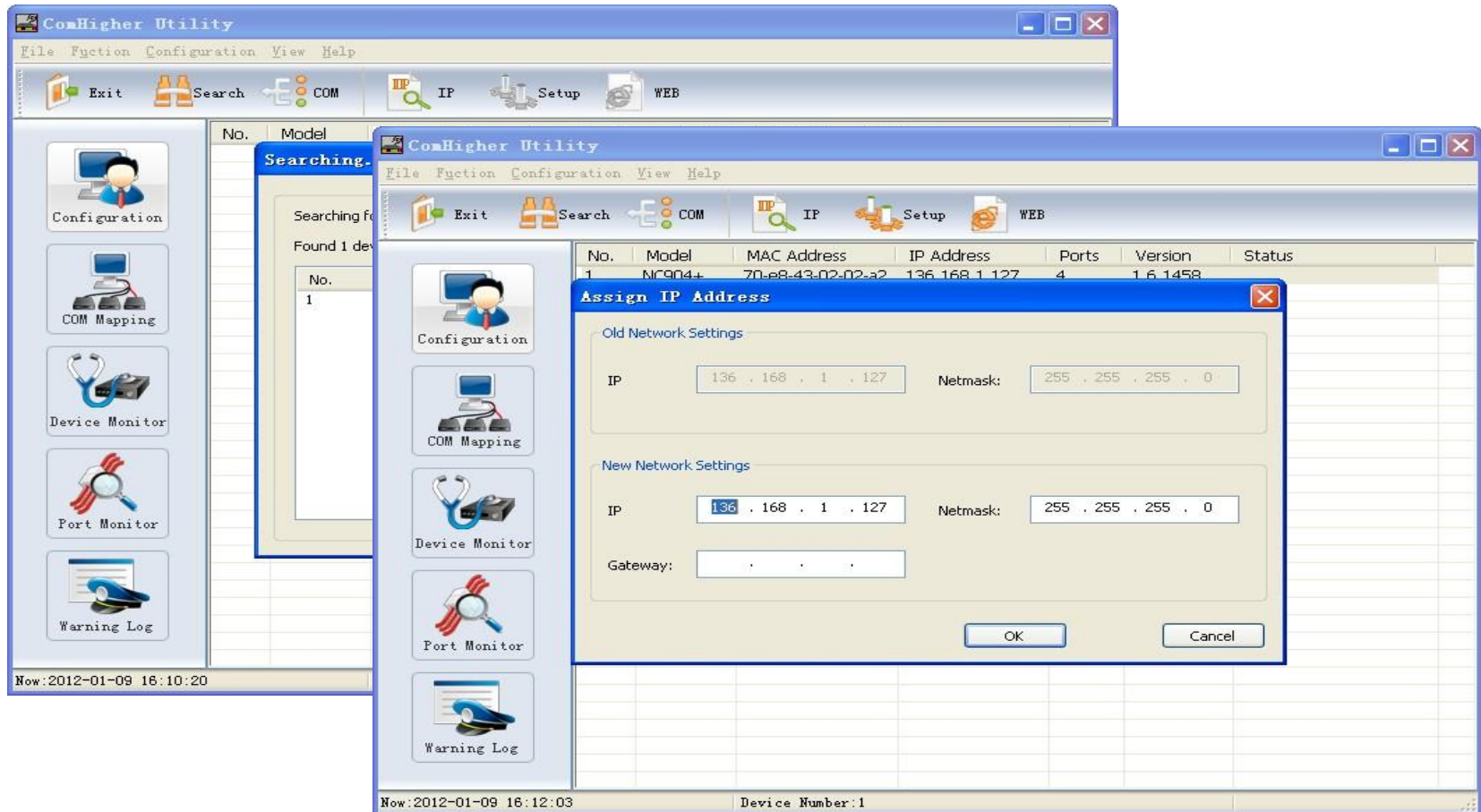
NC904/908/916-E (order directly from Hikvision)

- one 10M/100M self-adapt Ethernet connector interface (NC916-E has two network connector interfaces)
- 4/8/16 RS232 serial port interfaces
- RJ45 standard connector for both network and serial port
- 220V Power Supply

***Note: POS Printer which have already passed the compatible test:
Epson POS Printer***

Serial IO Server Configuration


Assign IP address for serial IO server



Serial IO Server Configuration

HIKVISION

Network Settings

 **COMHIGHER™**

- Main Menu
 - Overview
 - Network Settings**
 - Serial Settings
 - Operating Settings
 - Security Settings
 - Auto Warning Settings
 - Monitor
 - Load Factory Default
 - Save/Restart

Network Settings

Basic Settings	
Host Name	MC904+

IP Settings	
DHCP	<input type="radio"/> Enable <input checked="" type="radio"/> Disable
IP Address	136.168.1.127
Netmask	255.255.255.0
Gateway	136.168.1.1
Primary DNS	
Secondary DNS	

IP Address Report	
Auto report to IP	
Auto report to port	8080
Auto report period	10 seconds

SNMP Settings	
SNMP	<input type="radio"/> Enable <input checked="" type="radio"/> Disable
Community Name	public
Comment Info	

Submit

Serial IO Server Configuration

Serial Settings

The screenshot displays the 'Serial Settings' configuration page for a COMHIGHER device. The interface features a blue header with the 'COMHIGHER' logo and a left-hand navigation menu. The main content area is titled 'Serial Settings' and shows the configuration for 'Port1'. The settings include fields for Alias, Interface (set to RS232), Baud rate (set to 9600), Data bits (set to 8), Stop bits (set to 1), Flow control (set to None), Parity (set to None), RTS Control (set to Auto), and DTR Control (set to Auto). The FIFO option is set to 'Disale' (likely a typo for Disable). A checkbox for 'Apply the above settings to all serial ports' is present and unchecked. A 'Submit' button is located at the bottom right of the settings area.

COMHIGHER™

Serial Settings

Port1

Alias	<input type="text"/>
Interface	RS232
Baud rate	9600
Data bits	8
Stop bits	1
Flow control	None
Parity	None
RTS Control	Auto
DTR Control	Auto
FIFO	<input type="radio"/> Enable <input checked="" type="radio"/> Disale

☐ Apply the above settings to all serial ports


Submit

Main Menu

- Overview
- Network Settings
- Serial Settings
 - Port1
 - Port2
 - Port3
 - Port4
- Operating Settings
- Security Settings
- Auto Warning Settings
- Monitor
- Load Factory Default
- Save/Restart

Serial IO Server Configuration

Operating Settings

COMHIGHER™

- Main Menu
 - Overview
 - Network Settings
 - Serial Settings
 - Port1
 - Port2
 - Port3
 - Port4
 - Operating Settings
 - Port1**
 - Port2
 - Port3
 - Port4
 - Security Settings
 - Auto Warning Settings
 - Monitor
 - Load Factory Default
 - Save/Restart

Operating Settings

Port1

Operation mode	TCP Client Mode		
	Destination IP address	Destination port	Local port
Destination IP address 1	136.168.1.126	14006	9000
Destination IP address 2		10002	0
Destination IP address 3		10002	0
Destination IP address 4		10002	0
Destination IP address 5		10002	0
Destination IP address 6		10002	0
Connection control	Data		
Disconnection control	Idle		
TCP alive check time	0 (0 - 128min)		
Inactivity time	0 (0 - 60000ms)		
Ignore jammed IP	<input type="radio"/> Enable <input checked="" type="radio"/> Disable		

Data Packing

Packing length	50 (0 - 1000)
Delimiter number	0
Delimiter1	0 (0 - 255)
Delimiter2	0 (0 - 255)
Delimiter process	No nothing
Force transmit	5 (0 - 60000ms)

☐ Apply the above settings to all serial ports

DVR Configuration

HIKVISION

POS Settings

Configuration

General
Network
Alarm
RS-232
Live View
Exceptions
User
POS

POS Base Setting

Local Receive Port	14006
POS Server NO.	Server 1
POS Server Ip	172 . 6 . 13 . 3
POS NO.	POS1
POS Port	9001
Camera (Read Only)	Analog 1

Live View

Apply Back

DVR Configuration

POS Record Schedule Settings



Successful story

HIKVISION

The shop of South Africa TOTAL Service stations





1

Brief Introduction

2

POS DVR Solution

3

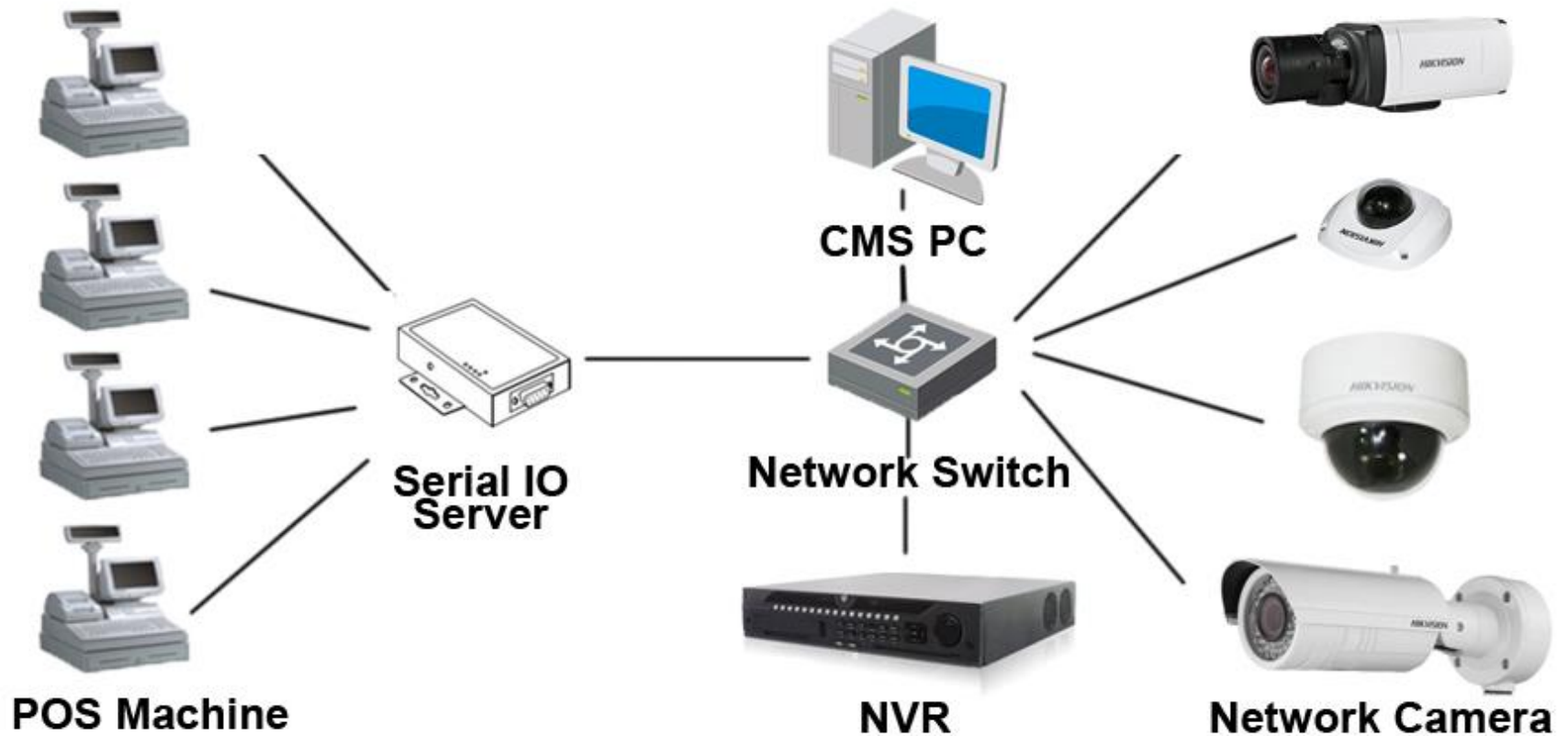
POS Network Camera Solution

4

Hybrid Solution

5

Topology



DS-2CD864FWD-E



- Up to 1.3 megapixel resolution
- H.264 video compression
- 120dB Wide Dynamic Range
- Better low illumination performance
- Support mobile phone surveillance
- IR cut filter with auto switch
- PoE (Power over Ethernet)

DS-2CD7164-E



- Up to 1.3 megapixel resolution
- H.264 video compression
- Support mobile phone surveillance
- PoE (Power over Ethernet)
- Weather Proof Level: IP66
- Impact Protection: up to IK10

Other TI 365 Platform Network Camera

DS-2CD853F-E

DS-2CD754FWD-E(I)(Z)

DS-2CD854F-E

DS-2CD8254F-E(I)(Z)

DS-2CD855F-E

DS-2CD783F-E(I)(Z)

DS-2CD7153-E

DS-2CD883F-E

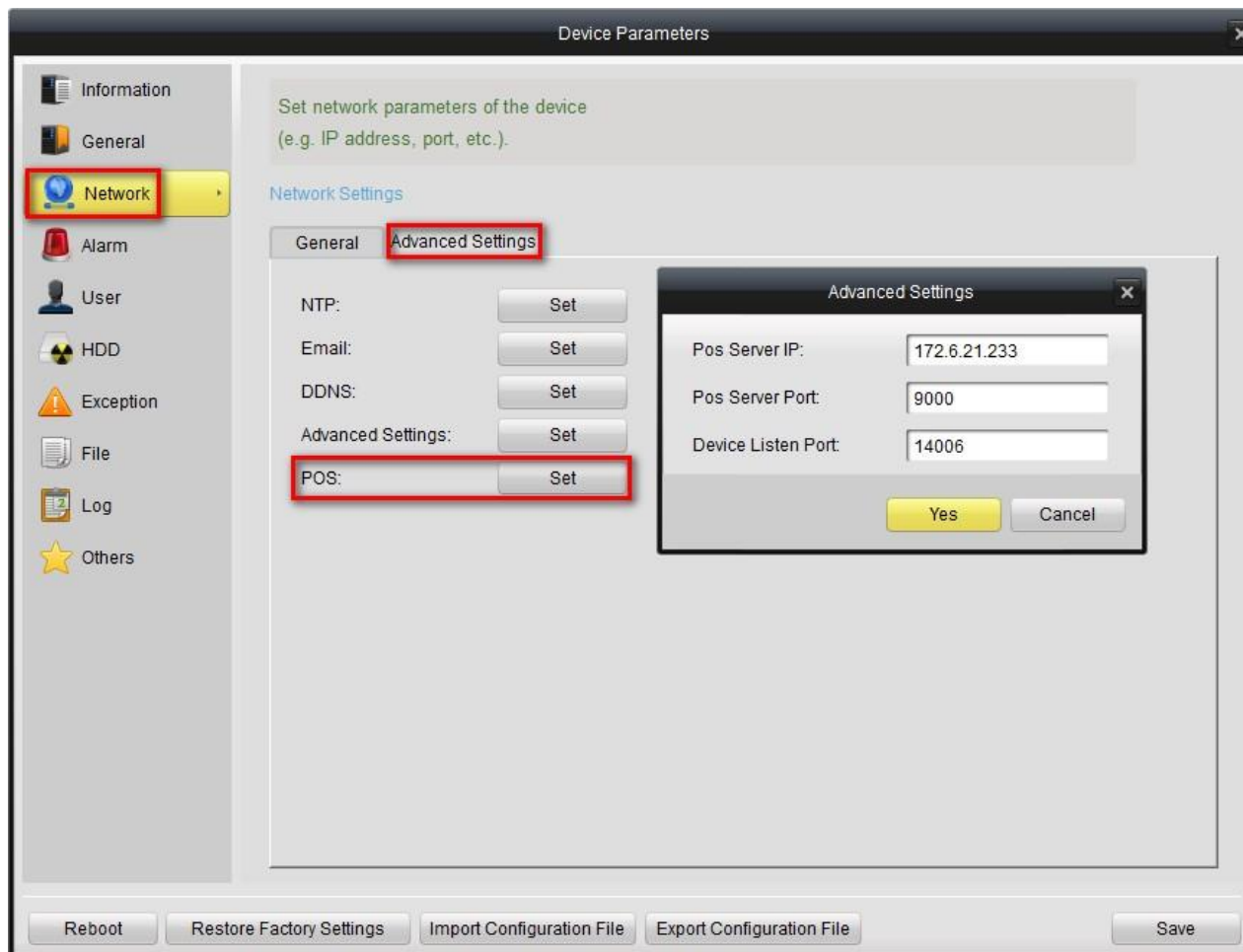
DS-2CD8264FWD-E(I)(Z)

DS-2CD8253F-E(I)(Z)

•
•
•
•
•
•

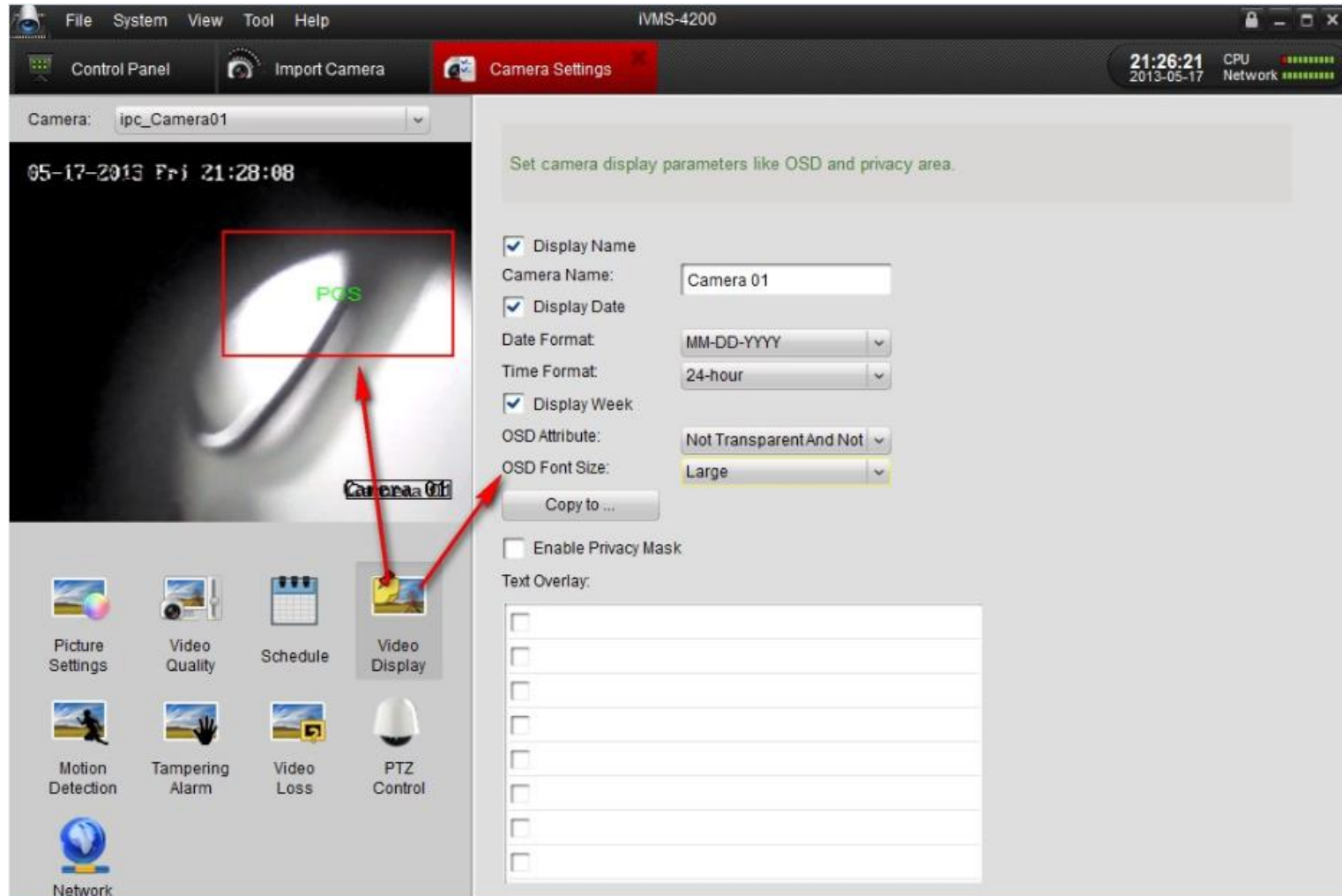
Network Camera Configuration

POS Settings of TI365 Series IP Camera



Network Camera Configuration

The size of overlay text area and font size settings



DS-9600NI-ST



- H.264 video compression
- Support network camera of resolution up to 5 megapixel
- Support up to 32 network cameras
- POS local recording
- POS record local playback
- Support POS keyword search
- 8 SATA interfaces available
- Dual system, dual network interfaces

NVR Configuration

POS Record Schedule Settings

The image displays two screenshots of the NVR configuration interface, specifically the 'Record' section for 'IP Camera 1'.

Left Screenshot (Edit Dialog):

- Record** (selected) | Capture
- Camera: IP Camera 1
- Enable Schedule: ☒
- Edit** (selected) | Schedule
- Mon** (selected)
- All Day**: ☒ Type: POS
- Start/End Time: 00:00-00:00 Type: POS
- Start/End Time: 00:00-00:00 Type: POS
- Start/End Time: 00:00-00:00 Type: POS
- Start/End Time: 00:00-00:00 Type: POS
- Start/End Time: 00:00-00:00 Type: POS
- Start/End Time: 00:00-00:00 Type: POS
- Start/End Time: 00:00-00:00 Type: POS
- Buttons: Copy, Apply, OK

Right Screenshot (Main Record Window):

- Record** (selected) | Capture
- Camera: IP Camera 1
- Enable Schedule: ☒
- Grid (Time: 0, 2, 4, 6, 8, 10, 12, 14, 16, 18, 20, 22, 24):

 - Mon: POS
 - Tue: POS
 - Wed: POS
 - Thu: POS
 - Fri: POS
 - Sat: POS
 - Sun: POS

- Legend: Normal (Blue), Motion (Yellow), Alarm (Red), M & A (Light Blue), POS (Green)
- Buttons: Copy, Apply, Back

POS Playback via Local NVR

POS Record Local Playback

<u>Normal</u>	Event	Tag	Picture
<input checked="" type="checkbox"/> IP Camera	<input checked="" type="checkbox"/> D1	<input checked="" type="checkbox"/> D2	<input checked="" type="checkbox"/> D3
	<input checked="" type="checkbox"/> D4	<input checked="" type="checkbox"/> D5	<input checked="" type="checkbox"/> D6
	<input checked="" type="checkbox"/> D7	<input checked="" type="checkbox"/> D8	<input checked="" type="checkbox"/> D9
	<input checked="" type="checkbox"/> D10	<input checked="" type="checkbox"/> D11	<input checked="" type="checkbox"/> D12
	<input checked="" type="checkbox"/> D13	<input checked="" type="checkbox"/> D14	<input checked="" type="checkbox"/> D15
	<input checked="" type="checkbox"/> D16	<input checked="" type="checkbox"/> D17	<input checked="" type="checkbox"/> D18
	<input checked="" type="checkbox"/> D19	<input checked="" type="checkbox"/> D20	<input checked="" type="checkbox"/> D21
	<input checked="" type="checkbox"/> D22	<input checked="" type="checkbox"/> D23	<input checked="" type="checkbox"/> D24
	<input checked="" type="checkbox"/> D25	<input checked="" type="checkbox"/> D26	<input checked="" type="checkbox"/> D27
	<input checked="" type="checkbox"/> D28	<input checked="" type="checkbox"/> D29	<input checked="" type="checkbox"/> D30
	<input checked="" type="checkbox"/> D31	<input checked="" type="checkbox"/> D32	
Record Type	POS		
Eable Keyword	<input checked="" type="checkbox"/>		
Key Word	1234567890		
File Type	All		
Start Time	06-07-2012		00:00:00
End Time	06-07-2012		23:59:59
<div>PlaybackSearchCancel</div>			

Remotely POS Preview and playback via iVMS-4200



Successful story

HIKVISION

Pick n Pay supermarket of South Africa



Successful story

HIKVISION

Pick n Pay supermarket of South Africa





1

Brief Introduction

2

POS DVR Solution

3

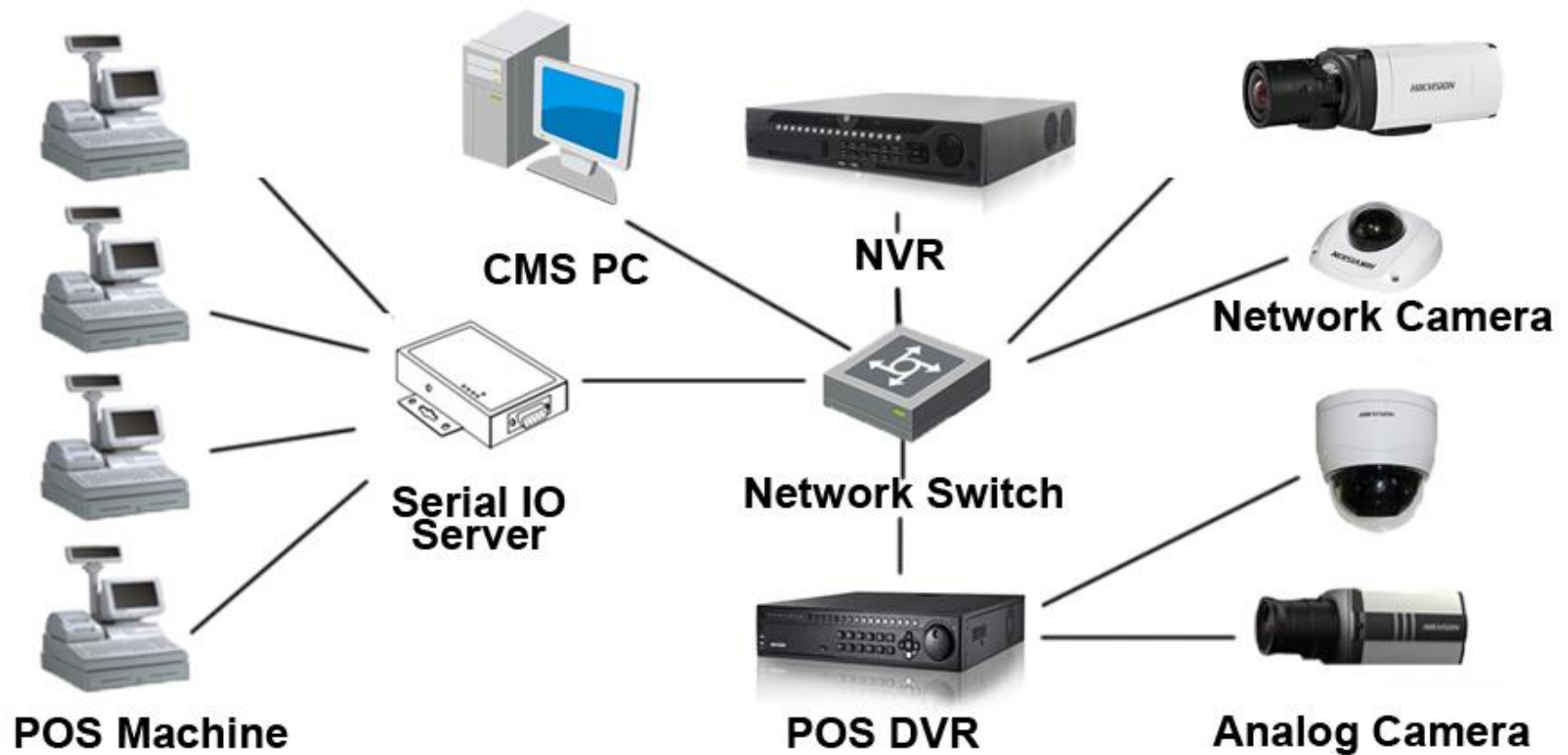
POS Network Camera Solution

4

Hybrid Solution

5

Topology



POS Device Models

HIKVISION

DVR

DS-8100HFI-ST (DZ20130628_46)

Network Camera

TI365 Platform Network Camera (DZ20130406_01)

NVR

DS-9600NI-ST (DZ20121108_14)

Client Software

iVMS-4200 (DZ20130406_01)

**All firmwares above are special customized firmware.
Please contact Hikvision Support Team for them.**

HIKVISION

First Choice for Security Professionals

